



Handsworth Wood
Girls' School
visual & performing arts

ASPIRING FOR EXCELLENCE



ASPIRING FOR EXCELLENCE

We are all very proud of Handsworth Wood Girls' School, where all students can excel and enjoy their education.



This is a very diverse school, educating girls who represent a wide range of different cultures from around the world. Coupled with our history of continual improvement is an ethos based upon mutual respect. Students are supported to develop respect for themselves as individuals, for others and for the studies and activities in which they are engaged. Our motto of "Aspiring for Excellence" embraces the idea that all our students can achieve success in all that they do during their time here.

In order to ensure that students are equipped to succeed in the 21st Century, we provide an education which, in addition to securing them the best qualifications possible, builds their confidence and self-esteem by supporting them to develop the skills and competencies necessary to achieve their aspirations. We work with a variety of partners who enable us to offer diverse and specialised opportunities to our students. It is our vision that all learners have a voice which can be heard within the school, and an individual experience enabling them to succeed both personally and academically within a harmonious environment.

Nicola Walters
Headteacher

Learning is at the heart of our school.
We aspire to engage all students in their
learning and to be active participants.



In January 2011, Ofsted judged the quality of teaching and learning here as good with much of it being outstanding. In lessons, teachers use a wide variety of activities to ensure that students of all abilities are able to access learning successfully and to take pride in their newly-gained knowledge and skills. Being a culturally diverse school, we place great importance on being outward-looking, seeking to bring into school different experiences to inspire our students and to gain a better understanding of the world that we live in.

Achievement stems from high quality learning and teaching. This is paramount. Students' progress is monitored carefully by teachers, with intervention strategies implemented where the need arises. Learning and achievement are also supported through a range of enrichment activities in sport, science, humanities, languages, English, mathematics and business studies, including trips abroad.

AWWE & WONDER

CREATIVITY

In all key stages, we personalise the learning and teaching to the students' individual needs. We believe in challenging our students to achieve beyond expectations.



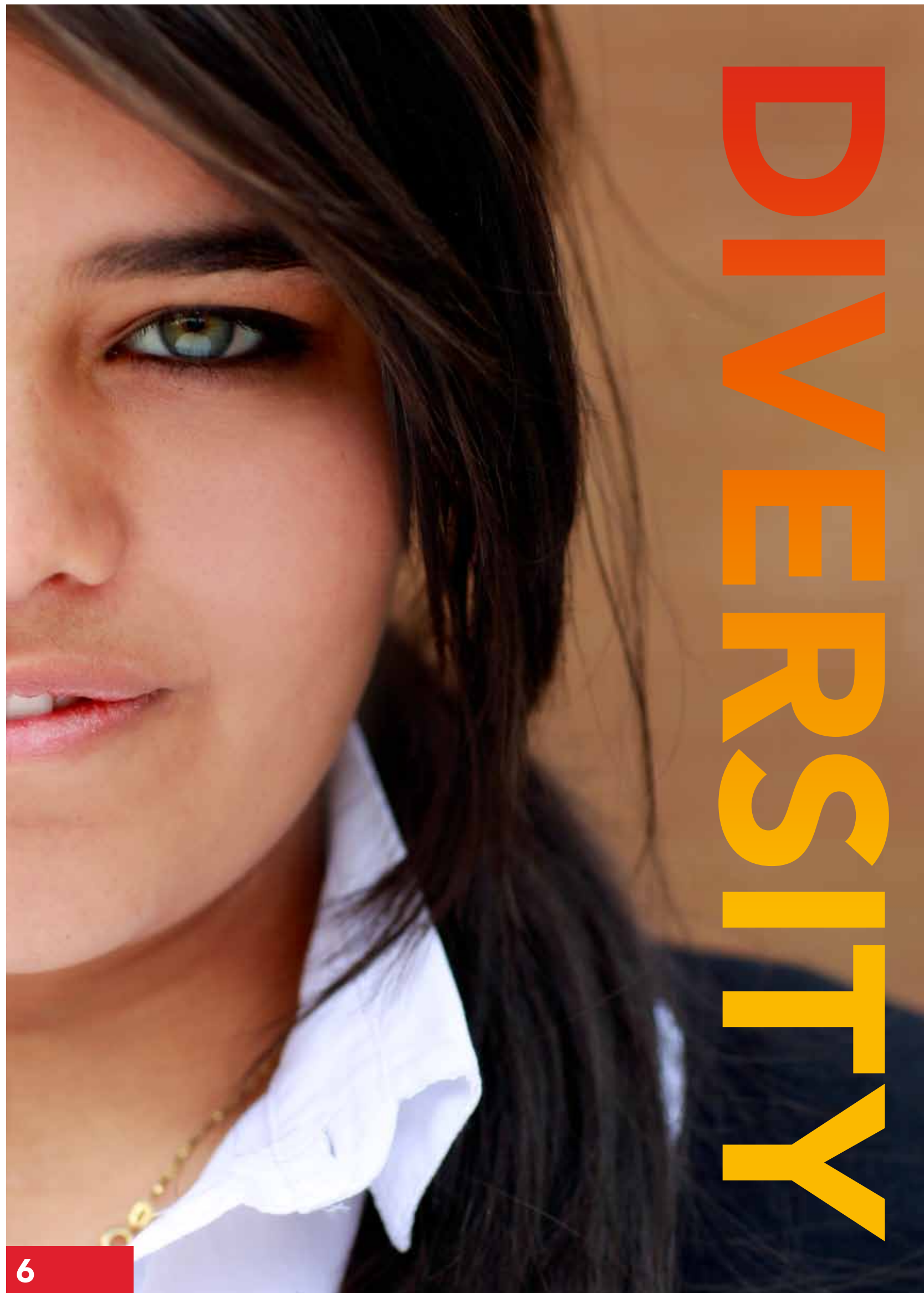
In KS4, access to many GCSE and vocational courses allows students to study subjects of particular interest to them in addition to the core subjects of English, mathematics and science. This prepares the girls well for the Sixth Form where they may choose from over fifty courses.

Our vibrant and committed drama, music, art and dance specialists provide our students with a multitude of opportunities to participate in all aspects of the school's specialism. Whether it is the whole school musical, a professional art workshop, or our Gospel Choir, we recognise the value that fostering the arts has on our students' whole education.

Student leadership is encouraged both within the classroom and throughout the school community. A strong and active School Council, participation in the Young People's Parliament, Sporting Leadership Academies, and the nationally recognised Arts Award encourages leadership and participation in every aspect of the school.

& CHALLENGE





& HARMONY

Handsworth Wood Girls' School is a truly international community reflected in the composition of its staff and students.



The school environment reflects the multicultural nature of British society and the school has well embedded policies and practices relating to equality and diversity. We have zero tolerance to racism and bullying. All students and staff play a strong role in supporting cultural differences through training, student voice and school events.

School events and performances open to parents and members of the community reflect a wide range of the arts and other aspects of the curriculum across all subject areas. This includes a focus on cultural diversity and equality. There is a strong emphasis upon exploring and promoting community cohesion and students' own identities, and developing inclusive values such as tolerance, acceptance and respect for others.

SUPPORT & TEAMWORK

We have a well established ethos of supporting our learners individually and through collaborations with our partners, so that our students can achieve their full potential and excel in their chosen subject areas.



In addition we ensure that our students are able to develop skills and attributes essential for modern technological life in the 21st century. The school is able to subscribe to a range of support and services which our students may require from time-to-time to support their education and well-being.

We pride ourselves on what Ofsted judged as "outstanding care guidance and support" which we believe enables our students to progress and achieve success. We believe that working in partnership with parents is vital and we keep parents informed of their daughter's progress through various forums and channels.



We celebrate being part of a diverse community while championing the individual.

Students are the heart of our community with a strong student voice on all aspects of school life. We are deservedly proud of our school and its commitment to high principles, moral purpose and student attainment. Through mutual respect and shared responsibility our students are encouraged to raise expectations of themselves and to aspire for excellence.

Partnerships with parents further support our students in fulfilling their potential. Our regular progress meetings and reports to parents, supported by effective communication systems, ensure our partnership with families works for the benefit of the whole school community.

This is a warm, friendly and welcoming school that strives to establish a sense of belonging for every member of our community. By encouraging hard work and a constructive contribution to the running of the school we have created an atmosphere in which pride and responsibility are evenly balanced.

PARTNERSHIP & COMMUNITY



ENERGY & COMMITMENT

Our most important resource is our staff. All are well-qualified and fully committed to teaching and supporting our students.

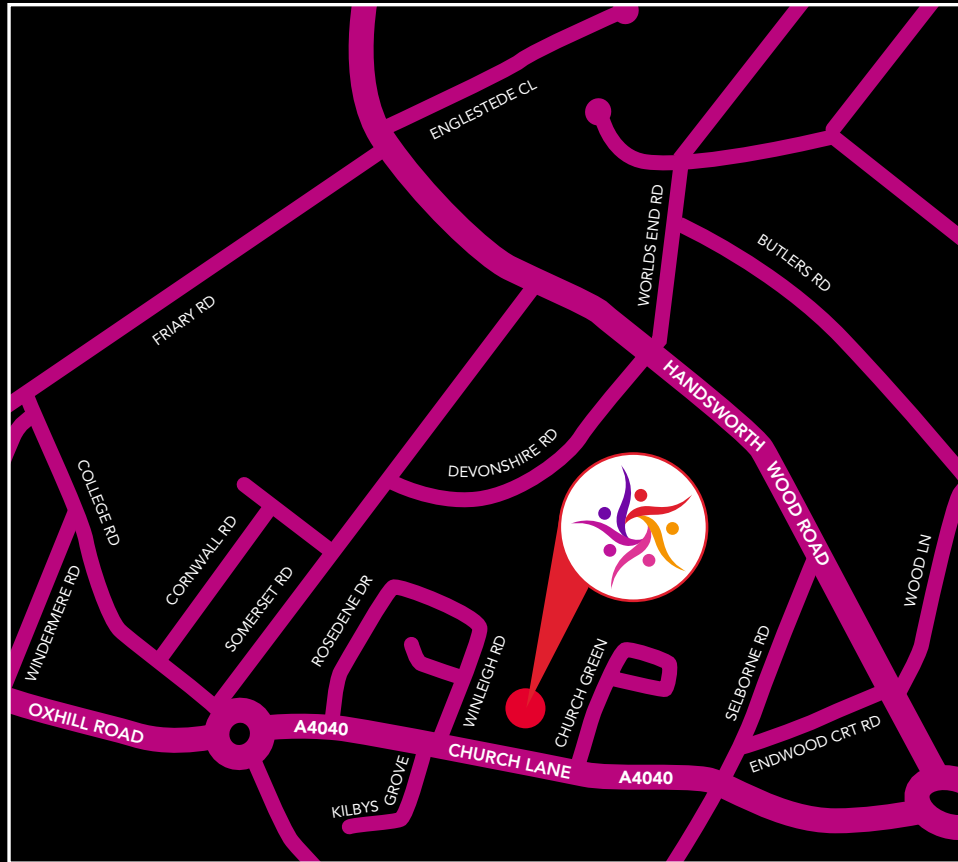


We have high expectations for them and in turn they carry out their various roles with utmost professionalism. Teamwork is crucial so staff are given time to work together on planning, developing schemes of work and learning resources, thus supporting each other in the process. In fact we place great emphasis on their training and development. This enables staff to extend their knowledge, understanding and skills in their subject areas as well as in the delivery of learning. This keeps them up to date with new developments, allowing for innovation and creativity.

Our staffing structure reflects the needs of our students by delivering learning and support to ensure they achieve success. We are also building the capacity of our teachers and support staff by offering opportunities to take on more responsibility in leadership and management roles. This supports succession planning and therefore the long term sustainability of success in the school.



Handsworth Wood
Girls' School
visual & performing arts



**Handsworth Wood
Girls' School**

visual & performing arts

Church Lane, Handsworth
Birmingham B20 2HL

T. 0121 554 8122 F. 0121 551 6805

enquiry@hworhwg.bham.sch.uk

www.hwgs.org.uk